



SINOCERA



Global Sensor Technology

## Piezoelectric Accelerometer (Standard)

Model: CA-YD-122

### Features

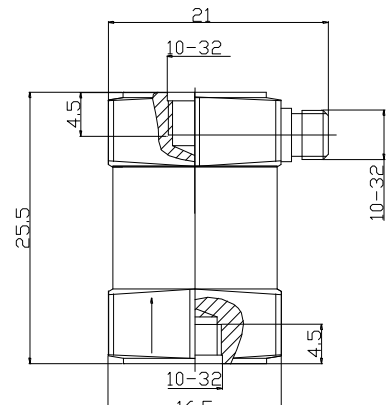
- Suitable for calibrate sensors by back to back type
- High stability
- Wide frequency range

### Main Specifications:

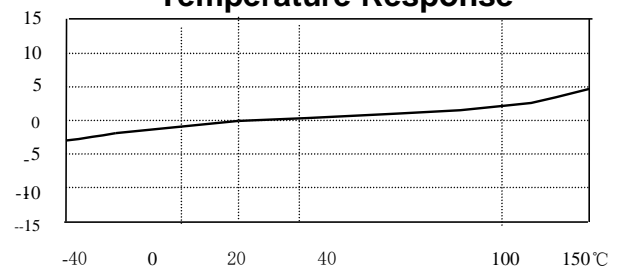
Sensitivity(20±5°C)	1.2 pC/g
Measurement Range(pk)	1000 g
Max Transverse Sensitivity	≤3 %
Frequency Response (±5%)	5~5000 Hz
Mounting Resonant Frequency	30,000 Hz
Operating Temp. Range	-40~+150 °C
Temperature Response	See Graph
Transient Temperature Response	20 mg/°C (0.3Hz)
Magnetic Sensitivity	1.5 g/T
Base Strain Sensitivity	0.2 mg/με
Case Isolation	> 10 <sup>9</sup> Ω
Capacitance	~1000 pF
Mounting	M5
Sensing Element	BST
Sensing Geometry	Shear
Case Material	Stainless steel
Weight	38 g
Output	Side L5
Accessories	
Certificate	Calibration parameter, frequency response
M8, M5/M8 Stud, Protective cap	Each one
L5/L5 STYV-1 (2m)	one



### Dimensions



### Temperature Response



### Frequency Response

