



Current Output Piezoelectric Velocity Transducer

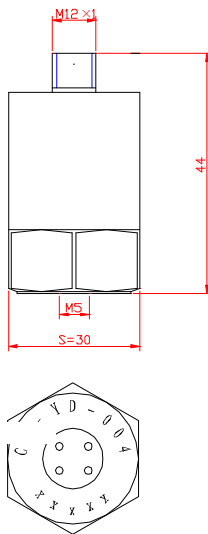
Model CS-YD-004

FEATURES

- 4 to 20mA output
- Built in high accuracy integrated circuit
- Wide frequency range
- Wide dynamic range
- High reliability

SUPPLIED WITH

- Calibration chart
- M5 to M5 stud
- RVVP four core cable, fitted with plug (3m)



PERFORMANCE

Sensitivity (at 20±5°C)	4 to 20mA
Velocity range	0 to 25.4mm
Transverse sensitivity	≤5%
Frequency response	see graph below
Frequency range (10%)	4 to 1000Hz
Output phase	in phase with input

ENVIRONMENTAL CHARACTERISTICS

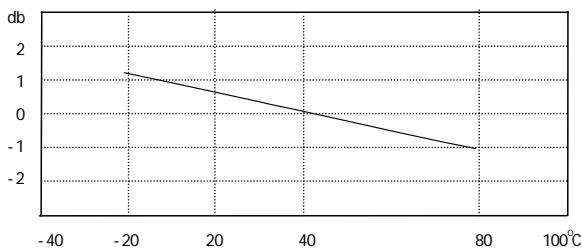
Temperature response	see graph below
Temperature range	-20 to +80°C

ELECTRICAL CHARACTERISTICS

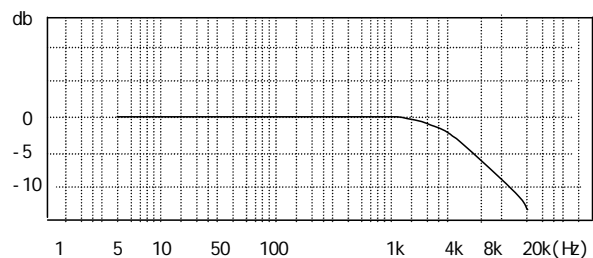
Supply voltage	16V to 30V(DC)
Output current	4 to 20mA
Electrical Connection	M12 × 1 four core socket
(1: supply, 2: -GND; 3: Output, 4: not in use)	

PHYSICAL CHARACTERISTICS

Weight	100g
Case material	Stainless steel
Mounting	M5 stud
Sensing element	PZT-5
Sensor design	Plane shear
Electrical connection	M12 × 1 four core socket
(Pin 1: +DC, Pin 2: -DC, Pin 3: GND, Pin 4: output)	



Typical Temperature Response



Typical Frequency Response (Hz)