



Weight Transducers (Strain Based)

Model CL-YB-1

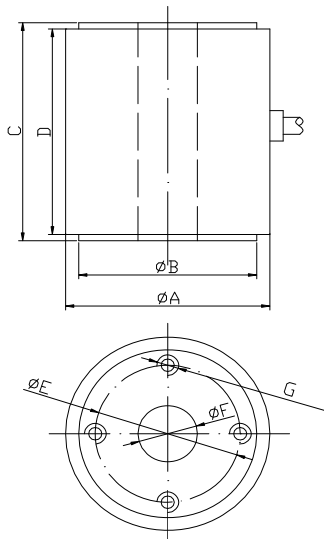
FEATURES:

- A compact column based structure is easy to install
- With partial & lateral ability and a compact structure allows for stable performance
- Used in belt scales, pressure and dynamic trajectories hopper criterion, etc



PERFORMANCE:

Sensitivity	1~1.5mV/V
Linear Range	5kN,10kN,20kN,30kN,50kN,100kN, 200kN,300kN,500kN,1000kN,2000kN
Nonlinearity	0.5% of Full Scale
Hysteresis	0.5% of Full Scale
Repeatability	0.5% of Full Scale
Overload Capacity	150% of Full Scale
Operating Temperature	-20 ~ +60 °C
Temperature [zero drift]	0.02%F·S/°C
Elastomer Material	Special alloy steel
Sensing Element	High precision strain gauge
Output Type	Five core shielded cable couplet



Mounting Dimension

Model	Linear Range	ΦA(mm)	ΦB(mm)	C(mm)	D(mm)	ΦE(mm)	ΦF(mm)	G(mm)
CL-YB-1/500k	500kf	Φ42	Φ35	50	48	Φ24	Φ18	2×4-M4,Depth:8
CL-YB-1/1t	1tf	Φ62	Φ55	70	68	Φ44	Φ18	2×4-M5,Depth:8
CL-YB-1/2t	2tf	Φ62	Φ55	70	68	Φ44	Φ18	2×4-M5,Depth:8
CL-YB-1/3t	3tf	Φ62	Φ55	70	68	Φ44	Φ18	2×4-M5,Depth:8
CL-YB-1/5t	5tf	Φ62	Φ55	70	68	Φ44	Φ18	2×4-M5,Depth:8
CL-YB-1/10t	10tf	Φ62	Φ55	90	88	Φ40	Φ24	2×4-M5,Depth:8
CL-YB-1/20t	20tf	Φ72	Φ60	90	88	Φ45	Φ24	2×4-M6,Depth:12
CL-YB-1/30t	30tf	Φ72	Φ60	120	116	Φ45	Φ20	2×4-M6,Depth:15
CL-YB-1/50t	50tf	Φ86	Φ70	130	126	Φ50	Φ20	2×4-M8,Depth:16

Note: special range, greater range can be customized