



SINOCERA



Global Sensor Technology

0.5Hz to 1kHz 100mV/ms⁻² ICPE Accelerometer

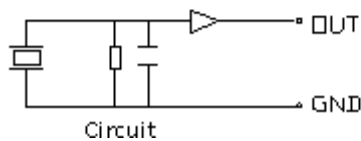
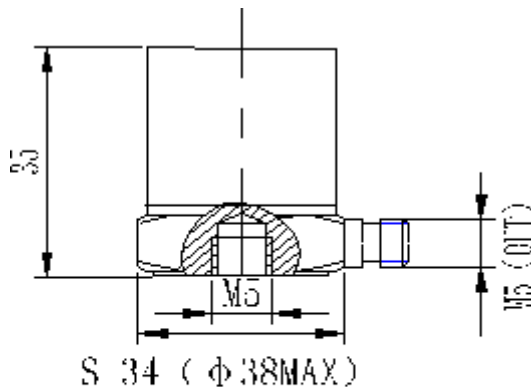
Model CA-YD-189

FEATURES

- Internal ICP circuit
- Low output impedance
- Connection with standard coax cable
- Simple measurement system

SUPPLIED WITH

- Calibration chart
- M5 to M5 stud
- M5 to M8 stud
- Protective cap
- STYV-1 cable, fitted with L5 connectors(2metres)



PERFORMANCE

Sensitivity (20±5°C)	100mV/ms ⁻²
Measurement range	50ms ⁻²
Transverse sensitivity	≤5%
Frequency response	see graph below
Frequency range (10%)	0.5Hz to 1kHz
Resonant frequency	5kHz
Temperature response	see graph below
Output phase	in phase with input

ELECTRICAL CHARACTERISTICS

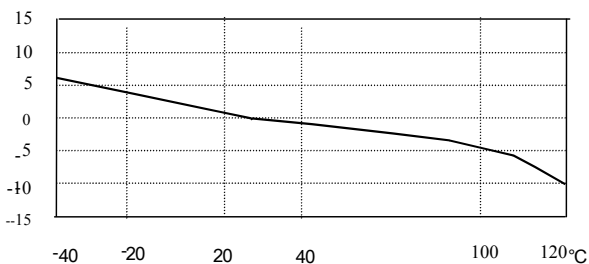
Supply voltage	12V to 28V(DC)
Operating current	2mA to 10mA
Maximum output (peak)	5V
Output impedance	<100Ω
Noise (1Hz to 20 kHz)	<4×10 ⁻⁴ ms ⁻²
DC offset	7±1V

ENVIRONMENTAL CHARACTERISTICS

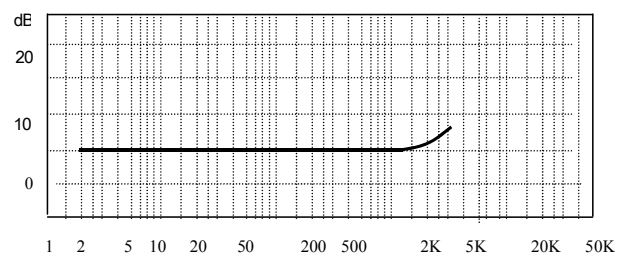
Temperature range	-20°C to 120°C
Shock limit	5,000ms ⁻²
Thermal transient sensitivity	8×10 ⁻⁴ ms ⁻² /°C(0.3Hz)
Magnetic sensitivity	15ms ⁻² /T
Base strain sensitivity	2×10 ⁻³ ms ⁻² /με

PHYSICAL CHARACTERISTICS

Weight	110g
Case material	stainless steel
Mounting	M5 thread
Sensing element	PZT-5
Sensing method	shear
Output connection	L5 side connector



Typical Temperature Response



Typical Frequency Response (Hz)

Global Sensor Technology

Unit 1, 26 Fairholme Road, Manchester, M20 4NT, UK

Phone: +44 (0)161 446 4848 Fax: +44 (0)161 438 2828 www.globalsensortech.com techsupport@globalsensortech.com