



SINOCERA



Global Sensor Technology

0.2Hz to 1kHz 50mV/ms⁻² ICPE Accelerometer

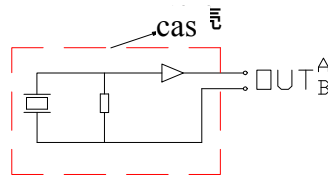
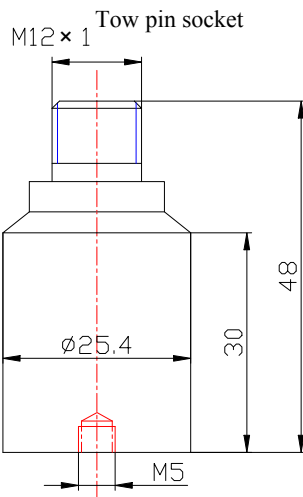
Model: CA-YD-188G

FEATURES

- Low impedance voltage output
- Isolation from case
- Connection with two core standard cable
- Robust package for use in industrial environments

SUPPLIED WITH

- Calibration chart
- M8 stud
- RVVP cable fitted with one M12×1 plug (3metres)



接 Circuit 图

PERFORMANCE

Sensitivity (20±5°C)	50±5% mV/ms ⁻²
Measurement range	100ms ⁻²
Transverse sensitivity	≤5%
Frequency response	see graph below
Frequency range (10%)	0.2Hz to 1kHz
Resonant frequency	6kHz
Temperature response	see graph below
Output phase	in phase with input

ELECTRICAL CHARACTERISTICS

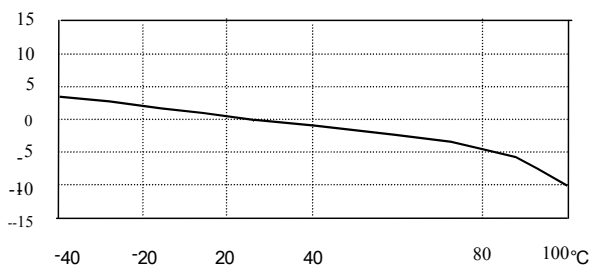
Supply voltage	12V to 28V(DC)
Operating current	2mA to 10mA
Maximum output (peak)	5V
Output impedance	<100Ω
Noise (1 to 20 kHz)	<8×10 ⁻⁴ ms ⁻²
DC offset	7±1V
Signal ground and case	≥10 ⁸ Ω

ENVIRONMENTAL CHARACTERISTICS

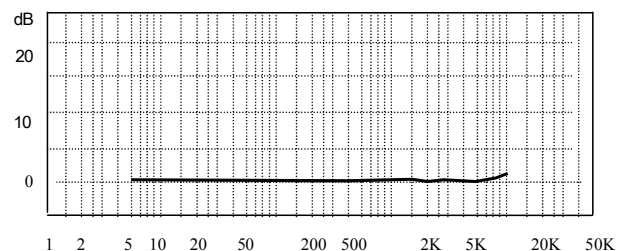
Temperature range	-20°C to 120°C
Shock limit	20,000ms ⁻²
Thermal transient sensitivity	0.5ms ⁻² /°C(0.3Hz)
Magnetic sensitivity	10ms ⁻² /T
Base strain sensitivity	4×10 ⁻³ ms ⁻² /με

PHYSICAL CHARACTERISTICS

Weight	120g
Case material	stainless steel
Mounting	M8 thread
Sensing element	PZT-5
Sensing method	plane shear
Output connection	top tow pin socket



Typical Temperature Response



Typical Frequency Response (Hz)

Global Sensor Technology

Unit 1, 26 Fairholme Road, Manchester, M20 4NT, UK

Phone: +44 (0)161 446 4848 Fax: +44 (0)161 438 2828 www.globalsensortech.com techsupport@globalsensortech.com