



SINOCERA



Global Sensor Technology

1Hz to 8kHz 1mV/ms⁻² ICPE Accelerometer

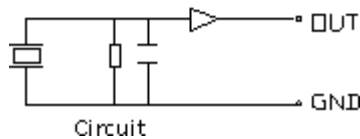
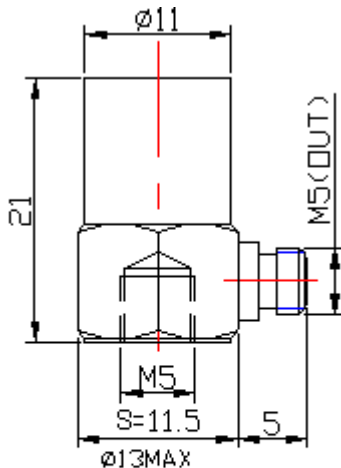
Model CA-YD-181

FEATURES

- Internal ICPE circuit
- Low output impedance
- Connection with standard cable
- Simple measurement system

SUPPLIED WITH

- Calibration chart
- M5 to M5 stud
- Protective cap
- STYV-1 cable, fitted with L5 connectors(2M)



PERFORMANCE

Sensitivity (20±5°C)	1mV/ms ⁻²
Measurement range	5000ms ⁻²
Transverse sensitivity	≤5%
Frequency response	see graph below
Frequency range (10%)	1Hz to 8kHz
Resonant frequency	35kHz
Temperature response	see graph below
Output phase	in phase with input

ELECTRICAL CHARACTERISTICS

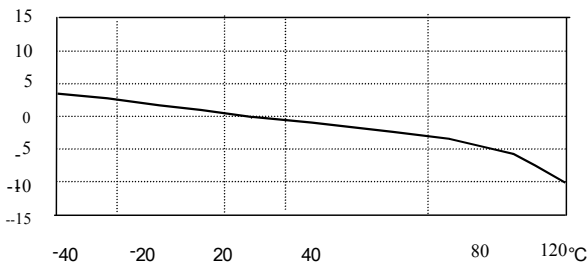
Supply voltage	12V to 28V(DC)
Operating current	2mA to 10mA
Maximum output (peak)	5V
Output impedance	<100Ω
Noise (1Hz to 20 kHz)	<0.05ms ⁻²
DC offset	7±1V

ENVIRONMENTAL CHARACTERISTICS

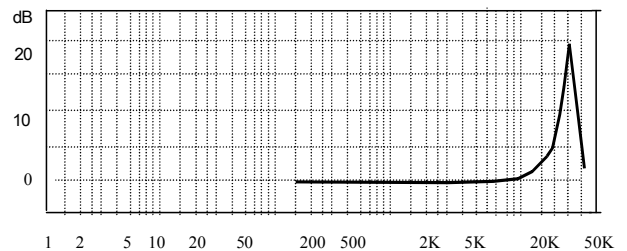
Temperature range	-20°C to 120°C
Shock limit	50,000ms ⁻²
Thermal transient sensitivity	1.2ms ⁻² /°C(3Hz)
Magnetic sensitivity	6ms ⁻² /T
Base strain sensitivity	20ms ⁻² /με

PHYSICAL CHARACTERISTICS

Weight	14g
Case material	stainless steel
Mounting	M5 thread
Sensing element	PZT-5
Sensing method	compression
Output connection	L5 side connector



Typical Temperature Response



Typical Frequency Response (Hz)