



SINOCERA



Global Sensor Technology

1Hz to 10kHz 0.5mV/ms⁻² ICPE Accelerometer

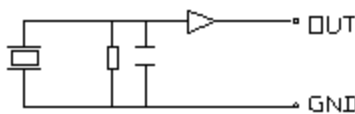
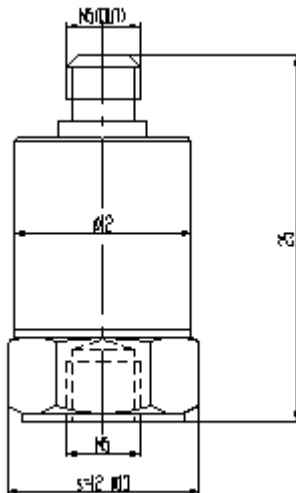
Model CA-YD-180

FEATURES

- Internal ICPE circuit
- Low output impedance
- Connection with common cable
- Simple measurement system

SUPPLIED WITH

- Calibration chart
- M5 to M5
- M5 to M8 stud
- Protective cap
- STYV-1 cable, fitted with L5 connectors(2metres)



PERFORMANCE

Sensitivity (20±5°C)	0.5mV/ms ⁻²
Measurement range	10,000ms ⁻²
Transverse sensitivity	≤5%
Frequency response	see graph below
Frequency range (10%)	1Hz to 10kHz
Resonant frequency	40kHz
Temperature response	see graph below
Output phase	in phase with input

ELECTRICAL CHARACTERISTICS

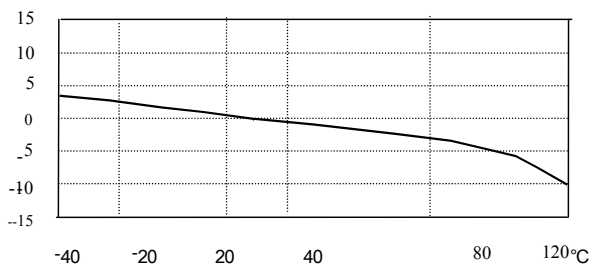
Supply voltage	12V to 28V(DC)
Operating current	2mA to 10mA
Maximum output (peak)	5V
Output impedance	<100Ω
Noise (1 to 20 kHz)	<0.08ms ⁻²
DC offset	7±1V

ENVIRONMENTAL CHARACTERISTICS

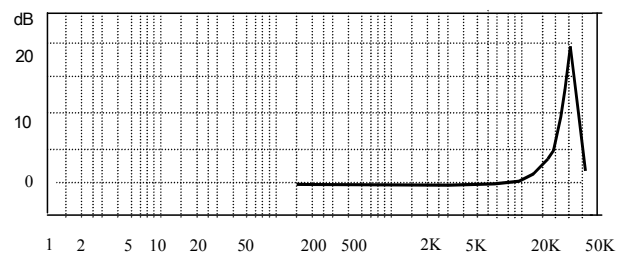
Temperature range	-20°C to 120°C
Shock limit	50,000 ms ⁻²
Thermal transient sensitivity	0.04ms ⁻² /°C(0.3Hz)
Magnetic sensitivity	5ms ⁻² /T
Base strain sensitivity	0.05ms ⁻² /με

PHYSICAL CHARACTERISTICS

Weight	8g
Case material	stainless steel
Mounting	M5 thread
Sensing element	PZT-5
Sensing method	shear
Output connection	L5 top connector



Typical Temperature Response



Typical Frequency Response (Hz)

Global Sensor Technology

Unit 1, 26 Fairholme Road, Manchester, M20 4NT, UK

Phone: +44 (0)161 446 4848 Fax: +44 (0)161 438 2828 www.globalsensortech.com techsupport@globalsensortech.com