



SINOCERA



Global Sensor Technology

## 1000pC/ms<sup>-2</sup> High Sensitivity Accelerometer

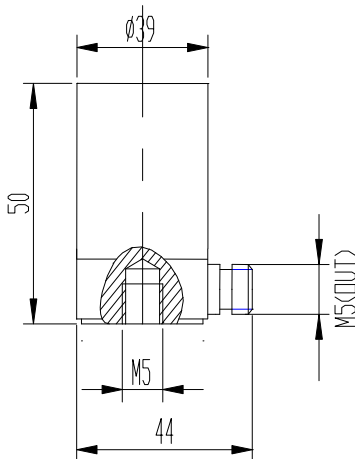
## Model CA-YD-109A

### FEATURES

- Low frequency and low level vibration measurement
- Very low frequency characteristics

### SUPPLIED WITH

- Calibration chart
- M5 to M5stud
- M5-to M8 stud
- Protective cap
- STYV-1 cable, fitted with L5 connectors (2metres)



### PERFORMANCE

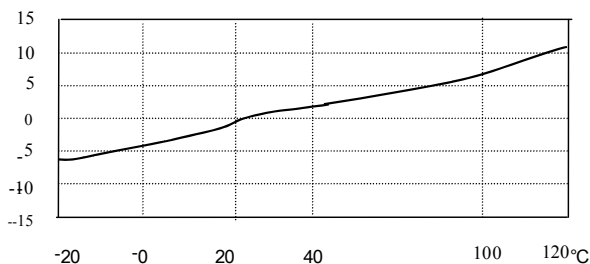
Sensitivity (at 20±5°C)	1000pC/ms <sup>-2</sup>
Transverse sensitivity	≤5%
Frequency response	see graph below
Frequency range (1dB)	0.2 to 500Hz
Resonant frequency	2500Hz
Temperature response	see graph below
Output phase	in phase with input
Isolation resistance	>10 <sup>9</sup> Ω
Capacitance	25000pF

### ENVIRONMENTAL CHARACTERISTICS

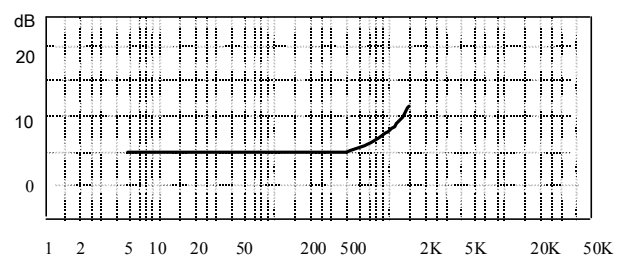
Temperature range	-20°C to 120°C
Shock limit	100ms <sup>-2</sup>
Thermal transient sensitivity	1×10 <sup>-3</sup> ms <sup>-2</sup> /°C (0.3Hz)
Magnetic sensitivity	6×10 <sup>-3</sup> ms <sup>-2</sup> /T
Base strain sensitivity	6×10 <sup>-3</sup> ms <sup>-2</sup> /με

### PHYSICAL CHARACTERISTICS

Weight	400g
Case material	LY12
Mounting	M5 stud
Sensing element	PZT-5
Sensing method	preload compression
Electrical connection	L5 side connector



Typical Temperature Response



Typical Frequency Response (Hz)

Global Sensor Technology

Unit 1, 26 Fairholme Road, Manchester, M20 4NT, UK

Phone: +44 (0)161 446 4848 Fax: +44 (0)161 438 2828 [www.globalsensortech.com](http://www.globalsensortech.com) techsupport@globalsensortech.com